

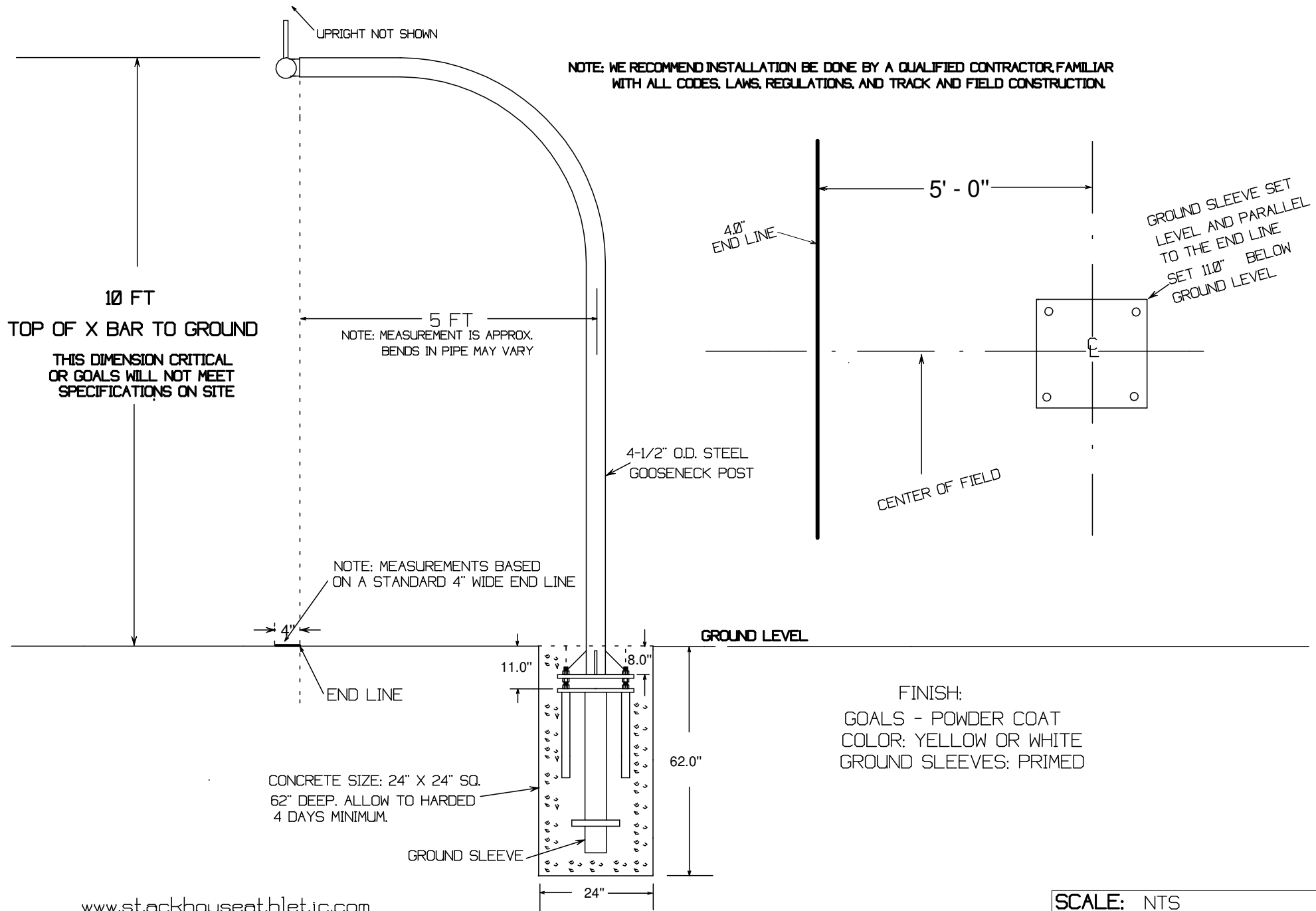
INSTALLATION INSTRUCTIONS FOR:  
 SEMI-PERMANENT "GOOSE NECK" GOAL POSTS  
 PRODUCT CODES - FGNGPH/FGNGP2Ø  
TOP PLATE TO BE SET AT 8" BELOW GROUND LEVEL

**NOTE: WE RECOMMEND INSTALLATION BE DONE BY A QUALIFIED CONTRACTOR, FAMILIAR WITH ALL CODES, LAWS, REGULATIONS, AND TRACK AND FIELD CONSTRUCTION.**

1. DETERMINE OFFSET DISTANCE BY MEASURING FROM FRONT OF CROSSBAR TO CENTER OF SUPPORT POST. THIS WILL BE APPROX. 5 FEET. CHECK MEASUREMENT AS BENDS IN PIPE MAY VARY. NOTE PAGE 2.
2. MEASURE FROM BACK OF 4" END LINE. DISTANCE DETERMINED IN # 1 THIS WILL CORRESPOND TO THE CENTER OF THE HOLE TO BE DUG.
3. DIG HOLES 24" X 24" X 62" DEEP. PLANT GROUND SLEEVE ABSOLUTELY LEVEL AND 11.Ø" BELOW THE GROUND SURFACE. BE SURE GROUND PLATE IS SQUARE WITH THE FIELD LAYOUT.
4. LET CONCRETE SET UP FOR AT LEAST 4 DAYS BEFORE ERECTING GOALS.
5. BOLT GOOSENECKS INTO PLACE USING THE STUDS AND NUTS AS SHOWN. SOME ADJUSTMENTS CAN BE MADE WITH USE OF THE TWO NUTS BETWEEN THE PLATES.
6. (PREFERABLY) , USE A HIGH LIFT TO INSERT CROSSBAR INTO END OF GOOSENECK. USE A LEVEL ON THE CROSSBAR AND TIGHTEN THE TWO 1/2" X 1" SET SCREW BOLTS LOCATED AT THE SIDES. PAGE 3.
7. DRILL OUT TOP AND BOTTOM (NUTS WITH NO THREADS) AND INSTALL THE 1/2" X 6" BOLT AS SHOWN ON PAGE 3.
8. INSTALL UPRIGHTS.TIGHTEN SET SCREWS. (3/8" X 1" HEX BOLTS).
9. COVER HOLE AROUND THE GOOSENECKS TO BRING IT UP TO THE LEVEL OF THE PLAYING FIELD.

[www.stackhouseathletic.com](http://www.stackhouseathletic.com)

SEMI-PERMANENT GOOSENECK FOOTBALL GOAL POSTS		DATE: 11-Ø8
INSTALLATION INSTRUCTIONS		DRAWN BY: S.L.
PAGE 1 of 3	PRODUCT CODE: FGNGPH/FGNGP2Ø	DWG:SEMI-PERM INST PG1-REV-Ø8



www.stackhouseathletic.com

**STACKHOUSE**  
athletic equipment

Phone: (503) 363-1840 Toll Free: (800) 285-3604  
Fax: (503) 363-0511 www.stackhouseathletic.com

SEMI-PERMANENT GOOSENECK FOOTBALL GOAL POSTS

INSTALLATION DRAWING

PAGE: 2 of 3

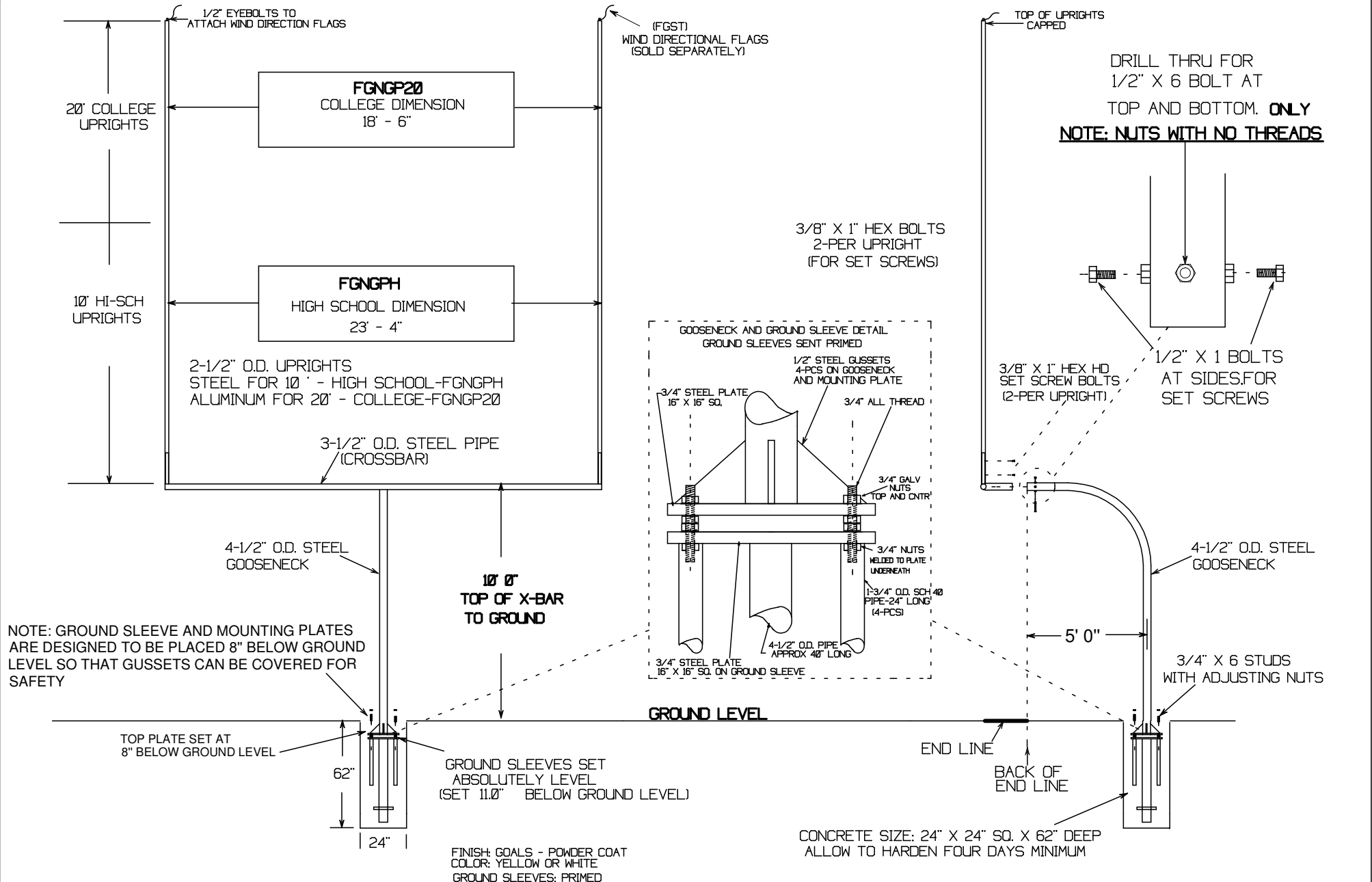
PRODUCT CODE: FGNGPH/FGNGP2Ø

SCALE: NTS

DATE: 11-Ø8

DRAWN BY: S.L.

DWG: SEMI-PERM INST PG2-REV-Ø8



www.stackhouseathletic.com

**STACKHOUSE** athletic equipment

Phone: (503) 363-1840 Toll Free: (800) 285-3604  
 Fax: (503) 363-0511 www.stackhouseathletic.com

SEMI-PERMANENT GOOSENECK FOOTBALL GOAL POSTS

INSTALLATION / ASSEMBLY DRAWING

PAGE 3 OF 3

PRODUCT CODE: FGNGPH/FGNGP20

SCALE: NTS

DATE: 11-08

DRAWN BY: S.L.

DWG: SEMI-PERM INST PG3-REV-08