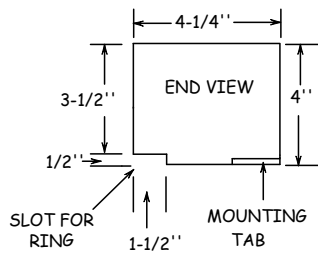
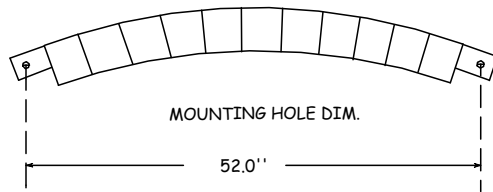


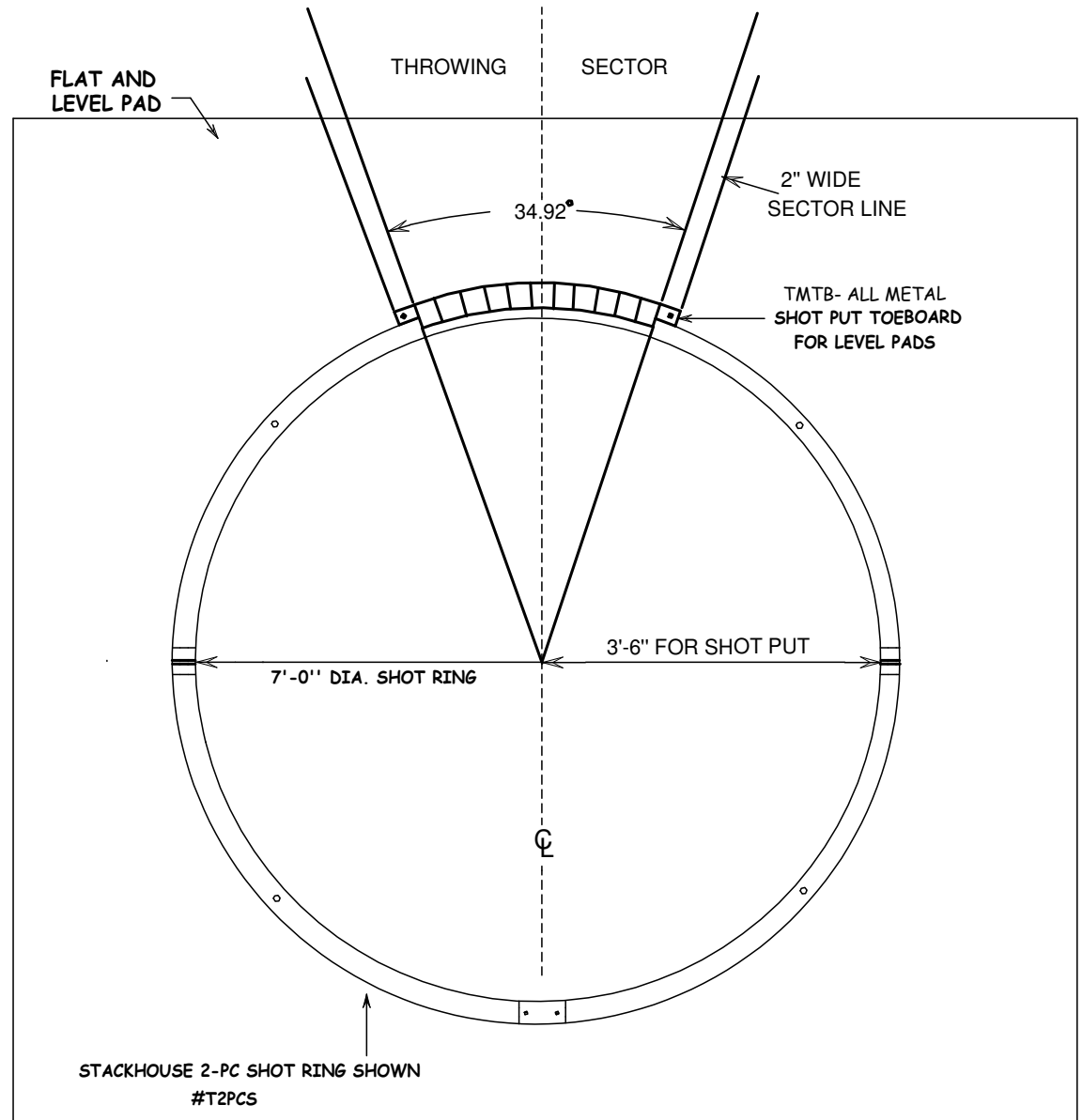
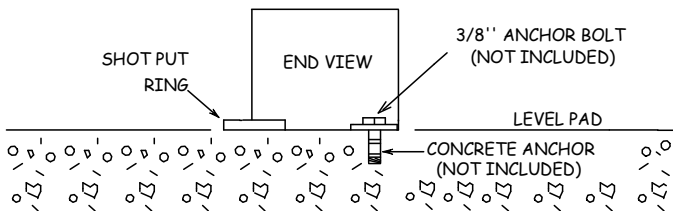
INSTALLATION INSTRUCTIONS FOR: ALL METAL TOEBOARD
ON FLAT LEVEL PAD. STACKHOUSE PRODUCT CODE- TMTB

INSTALLATION NOTES:

1. CONSULT CURRENT TRACK AND FIELD RULE BOOK BEFORE INSTALLATION.
2. CHECK ALL APPLICABLE CODES, LAWS, AND REGULATIONS.
3. INSTALLATION SHOULD BE DONE BY A QUALIFIED CONTRACTOR.
4. MOUNT TOEBOARD OVER PROPERLY INSTALLED SHOT PUT RING, CENTERED ON A LEVEL PAD.
5. MARK, AND DRILL FOR CONCRETE ANCHORS. SECURE WITH 3/8" BOLT ON ANCHOR TABS, EACH SIDE.



BRIGHT WHITE POWDER COAT FINISH



www.stackhouseathletic.com

SCALE: NTS

STACKHOUSE
athletic equipment

ALL METAL SHOT PUT TOE BOARD

DATE: 12-08

INSTALLATION DRAWING

DRAWN BY: S.L.

Phone: (503) 363-1840 Toll Free: (800) 285-3604
Fax: (503) 363-0511 www.stackhouseathletic.com

PAGE: 1 of 1

PRODUCT CODE: TMTB

DWG: TMTB INSTALL-REV-08