

INSTALLATION INSTRUCTIONS FOR STACKHOUSE OLYMPIAN POLE VAULT STANDARDS

ALWAYS CONSULT RULE BOOK BEFORE BEGINNING AN INSTALLATION.

1. WE RECOMMEND ALL INSTALLATIONS BE DONE BY A QUALIFIED CONTRACTOR, FAMILIAR WITH ALL LOCAL CODES, AND WITH TRACK AND FIELD CONSTRUCTION.
2. AREA FOR SLABS NEED TO BE LEVEL, AND AT THE SAME HEIGHT AS THE RUNWAY, AND THE TOP EDGES OF THE VAULT BOX, FOR ACCURATE MEASURING OF JUMP HEIGHTS.
3. FOR PROPER SLAB PLACEMENT, USE A STRAIGHT LINE, PERPENDICULAR TO THE TOP FRONT OF THE VAULT BOX AND THE RUNWAY. (THE "O" LINE, REFER TO PAGE 2). FROM THE CENTERLINE MEASURE 109" TO EACH SIDE. THIS POINT WILL BE THE INSIDE EDGES OF CONCRETE SLABS.
4. NEXT, MEASURE 46" FORWARD OF THE "O" LINE - (TOP FRONT EDGE OF THE VAULT BOX) . THIS WILL BE THE FRONT EDGE OF THE 76" X 31" SLAB. FORM AND POUR SLABS 76" X 31" X 4" DEEP, FLUSH WITH THE GROUND LEVEL.
5. AFTER SLABS HAVE CURED, PLACE BASE UNITS ON SLABS ACCORDING TO PAGE 3. MAKE SURE THE "O" MARK ON THE BASE SIDE TAPE LINES UP WITH THE "O" LINE DESCRIBED IN NUMBER 3 MARK FOR PLACEMENT OF 1/2" EXPANSION ANCHORS. (NOT PROVIDED)
6. SET ANCHORS ACCORDING TO ANCHOR MFG'S INSTRUCTIONS. BOLT BASES TO SLABS ACCORDING TO PAGE 3
7. ERECT STANDARDS ACCORDING TO PAGE 4.

www.stackhouseathletic.com

STACKHOUSE
athletic equipment

Phone: (503) 363-1840 Toll Free: (800) 285-3604
Fax: (503) 363-0511 www.stackhouseathletic.com

OLYMPIAN POLE VAULT STANDARDS

INSTALLATION INSTRUCTIONS

PAGE 1 of 4

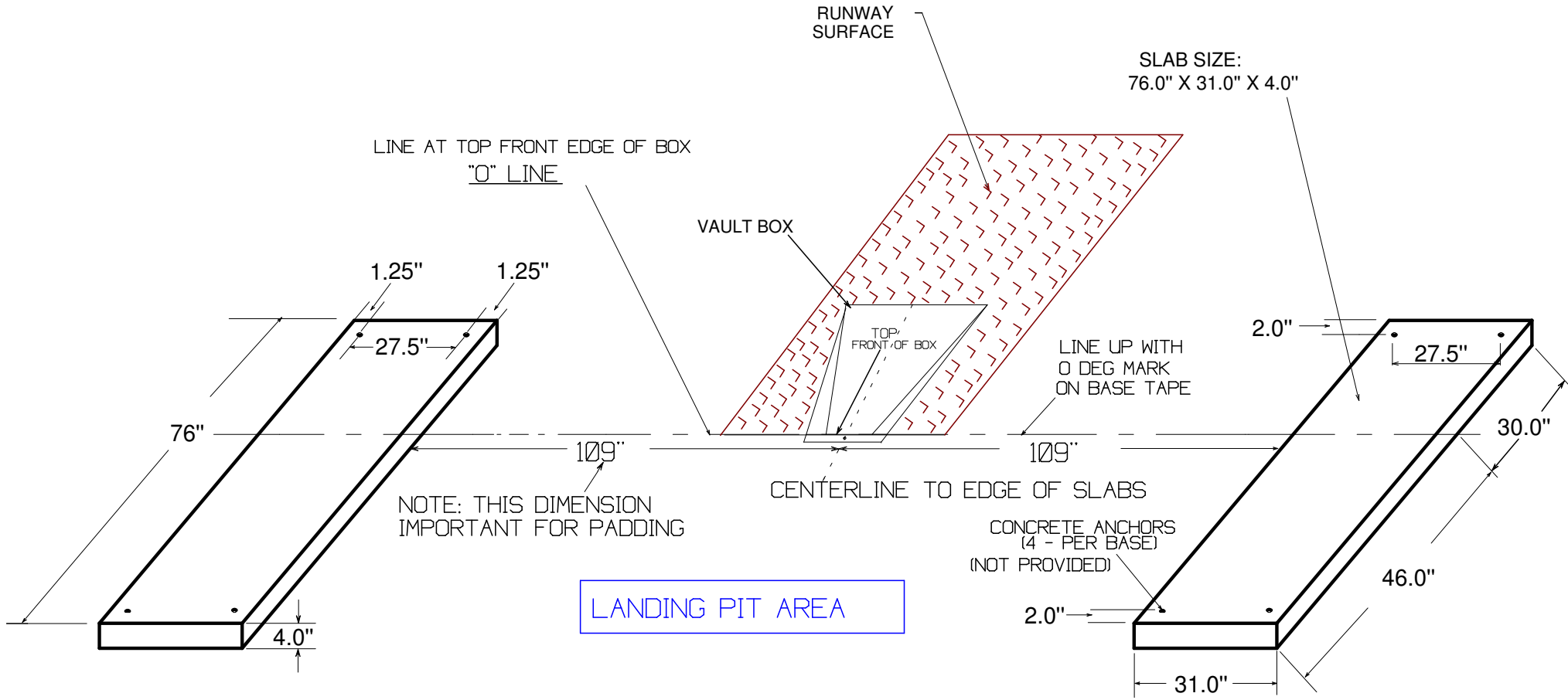
PRODUCT CODE: TOPVS

DATE: 12-08

DRAWN BY: S.L.

DWG: TOPVS INST-PGI-REV-08

CONCRETE PAD INSTALLATION FOR:
 STACKHOUSE OLYMPIAN POLE VAULT STANDARDS
 DIMENSIONS AND PLACEMENT



www.stackhouseathletic.com

SCALE: NTS

STACKHOUSE
athletic equipment

Phone: (503) 363-1840 Toll Free: (800) 285-3604
 Fax: (503) 363-0511 www.stackhouseathletic.com

OLYMPIAN POLE VAULT STANDARDS

DATE: 12-08

CONCRETE PAD INSTALLATION DRAWING

DRAWN BY: S.L.

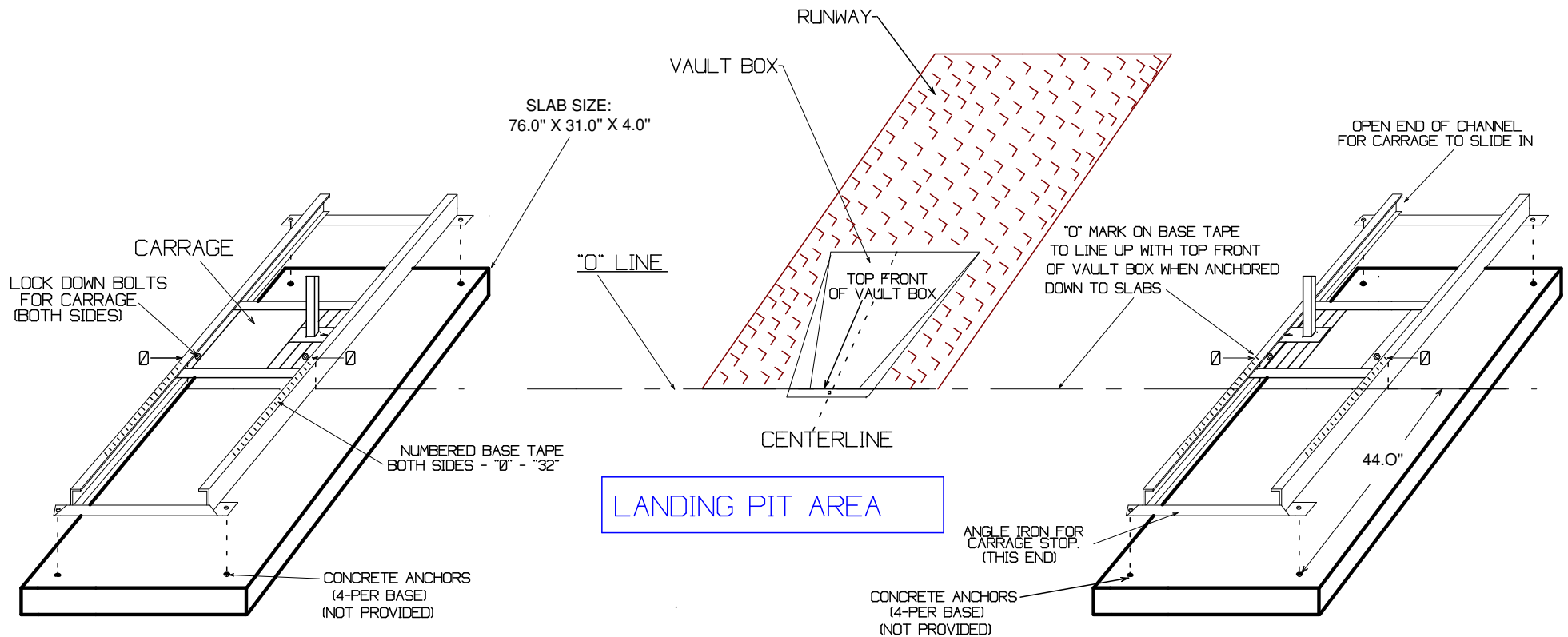
PAGE 2 of 4

PRODUCT CODE: TOPVS

DWG: TOPVS INST PG2-REV-08

INSTALLATION OF BASES TO
CONCRETE PADS FOR THE
STACKHOUSE OLYMPIAN POLE
VAULT STANDARDS.

BASE TO SLABS ILLUSTRATION DRAWING



www.stackhouseathletic.com

SCALE: NTS

STACKHOUSE
athletic equipment

OLYMPIAN POLE VAULT STANDARDS

DATE: 12-08

BASE TO CONCRETE PAD INSTALLATION DRAWING

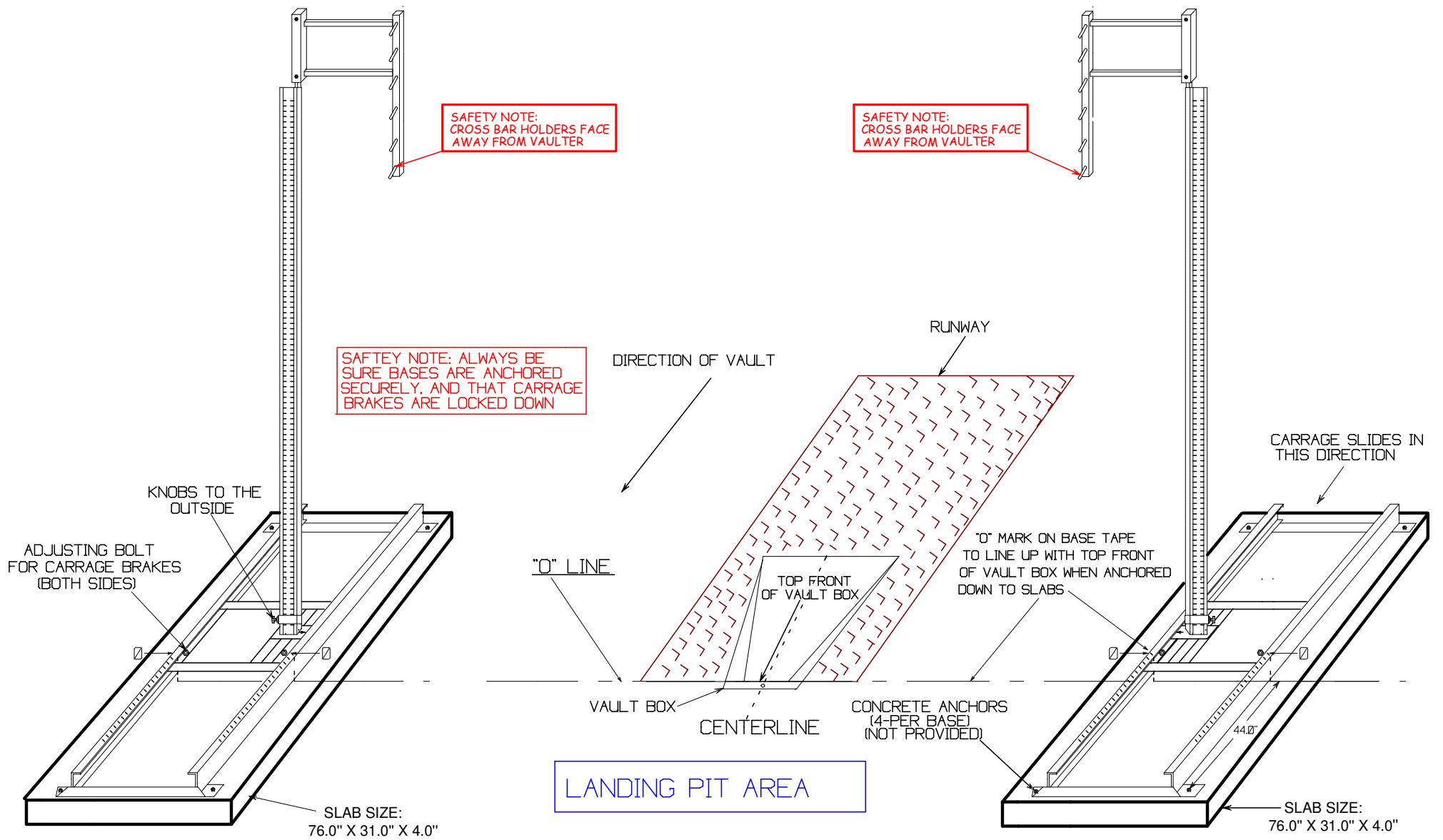
DRAWN BY: S.L.

Phone: (503) 363-1840 Toll Free: (800) 285-3604
Fax: (503) 363-0511 www.stackhouseathletic.com

PAGE 3 of 4

PRODUCT CODE: TOPVS

DWG: TOPVS INST PG3-REV-08



www.stackhouseathletic.com

STACKHOUSE athletic equipment

Phone: (503) 363-1840 Toll Free: (800) 285-3604
 Fax: (503) 363-0511 www.stackhouseathletic.com

OLYMPIAN POLE VAULT STANDARDS

STANDARD SET UP DRAWING

PAGE 4 of 4

PRODUCT CODE: TOPVS

SCALE: NTS

DATE: 12-08

DRAWN BY: S.L.

DWG: TOPVS INST PG4-REV-08