

MATERIAL SPECIFICATIONS:

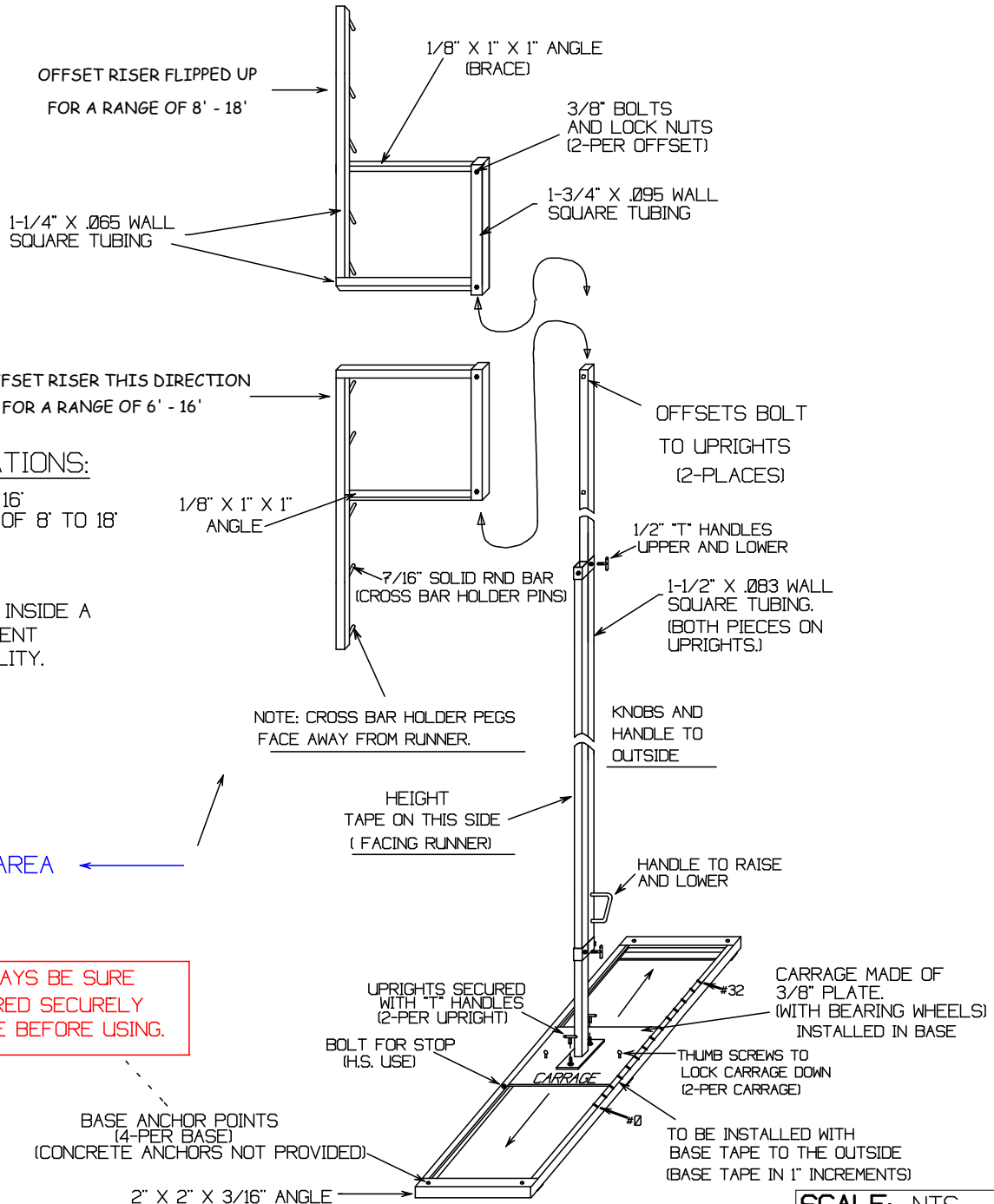
ALL STEEL CONSTRUCTION

- UPRIGHTS- ALL SQ. TUBE, ZINC PLATED STEEL EXCEPT 1/8 X 1 X 1 ANGLE BRACE
- BASES- 2" CHANNEL (SIDES)
2" X 2" X 3/16 ANGLE (ON ENDS)
- FINISH- ALL PIECES - BRIGHT ZINC

NOTE: RIGHT SIDE SHOWN

POLE VAULT STANDARD SPECIFICATIONS:

- TPVS6 VAULT STANDARDS ADJUST FROM 6' TO 16'
RESET RISER FOR ADDITIONAL HEIGHT RANGE OF 8' TO 18'
- EASY ADJUSTMENT HANDLE AND "T" HANDLE LOCK FOR HEIGHT ADJUSTMENT.
- UPRIGHTS MOVE ON ROLLER BEARING WHEELS INSIDE A 60" LONG BASE, WHICH GIVES 32" OF ADJUSTMENT BEHIND THE BOX* ALONG WITH ADDED STABILITY.



PIT AREA ←

SAFETY NOTE: ALWAYS BE SURE BASES ARE ANCHORED SECURELY AND PADS IN PLACE BEFORE USING.

www.stackhouseathletic.com

| |
|------------------------|
| SCALE: NTS |
| DATE: 12-08 |
| DRAWN BY: S.L. |
| DWG: TPVS6 SPEC-REV-08 |

STACKHOUSE athletic equipment

Phone: (503) 363-1840 Toll Free: (800) 285-3604
 Fax: (503) 363-0511 www.stackhouseathletic.com

| | |
|---------------------------------------|---------------------|
| 16FT POLE VAULT STANDARDS - ALL STEEL | |
| SPECIFICATION DRAWING | |
| SHEET 1 of 1 | PRODUCT CODE: TPVS6 |