

TOP VIEW

NOTE: CUT SURFACE AS STRAIGHT AS POSSIBLE TO FIT BOARD

INSTALL RUNWAY SURFACE OVER LIP OF TRAY AND FLUSH WITH TAKE-OFF BOARD

SAFETY NOTE: KEEP SPACE BETWEEN BOARD AND RUNWAY TO A MINIMUM.

NOTE: SET TRAY BELOW GROUND LEVEL SO THAT TOP OF BOARD IS FLUSH WITH THE RUNWAY SURFACE

NOTE: BOARDS MUST BE REMOVED TO INSTALL LID

FOUL BOARD

3/4" DIA. HOLES TO REMOVE BOARD AND FRAME UNIT (BOTH ENDS)

8' TO 12' - TO BEGINNING OF LANDING PIT AREA

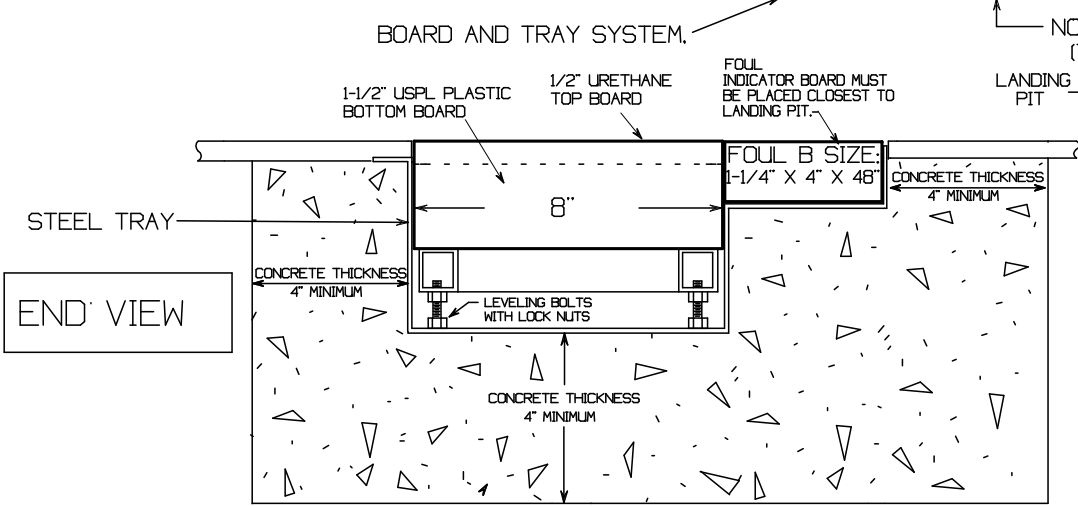
SAFETY NOTE: KEEP SPACE BETWEEN BOARD AND RUNWAY TO A MINIMUM.

INSTALL RUNWAY SURFACE UP TO, AND FLUSH WITH FOUL INDICATOR BOARD

BOARD AND TRAY SYSTEM.

NO TRAY LIP (THIS END)

6" CONCRETE PERIMETER CURB



END VIEW

1-1/2" USPL PLASTIC BOTTOM BOARD

1/2" URETHANE TOP BOARD

FOUL INDICATOR BOARD MUST BE PLACED CLOSEST TO LANDING PIT.

LANDING PIT

CONCRETE THICKNESS 4" MINIMUM

LEVELING BOLTS WITH LOCK NUTS

FOUL B SIZE: 1-1/4" X 4" X 48"

CONCRETE THICKNESS 4" MINIMUM

CONCRETE THICKNESS 4" MINIMUM

INSTALLATION RECOMMENDATIONS

1. WE RECOMMEND ALL TRAY SYSTEMS TO BE INSTALLED BY A QUALIFIED CONTRACTOR, FAMILIAR WITH TRACK AND FIELD CONSTRUCTION AND ALL LOCAL CODES AND RESTRICTIONS.
2. TRAY MUST BE SURROUNDED BY 4" OF CONCRETE, BOTTOM, SIDES, AND ENDS.
3. A WATER DRAIN MAY BE PLACED UNDER TRAY IF DESIRED, PROVIDING DRAIN RUNS TO AN APPROVED DRAINAGE SYSTEM.
4. LEVELING BOLTS CAN BE ADJUSTED TO BRING BOARD UP TO FLUSH WITH THE RUNWAY SURFACE MATERIAL.
5. LID IS INCLUDED WITH BOARD AND TRAY SYSTEM. BOARDS CAN BE REMOVED, AND LID INSTALLED WHEN NOT IN USE.

www.stackhouseathletic.com

SCALE: NTS



INTERNATIONAL TAKE-OFF BOARD AND TRAY SYSTEM

DATE: 12-08

INSTALLATION DRAWING

DRAWN BY: S.L.

Phone: (503) 363-1840 Toll Free: (800) 285-3604
Fax: (503) 363-0511 www.stackhouseathletic.com

PAGE 1 of 1

PRODUCT CODE: TTICS

DWG: TTICS INSTALL-REV-08