


VRAEW - ALUMINUM END STANDARD WITH WINCH.

ASSEMBLY AND SET-UP INSTRUCTIONS

1. UNPACK CONTENTS OF BOTH BOXES AND LAY OUT ON A FLAT SURFACE.
2. REFER TO SET UP DRAWING ON PAGE 3. SLIDE LOWER NET COLLAR UP FROM THE BOTTOM OF STANDARD TO POSITION SHOWN.
3. SLIDE WINCH ASSEMBLY UP FROM THE BOTTOM AND POSITION AS SHOWN, WITH CRANK HANDLE TO THE OUTSIDE OF COURT. TIGHTEN LIGHTLY UNTILL SET UP.
4. SPRING ASSEMBLY FOR TOP IS SHIPPED INSIDE OF STANDARD WITH NO TENSTION. REMOVE TOP, AND REMOVE SPRING. THEN INSTALL THE 3/8 X 3-1/4 HEX BOLT IN HOLE IN STANDARD. REPLACE SPRING. CAREFULLY REINSTALL TOP AND LOCK DOWN WITH LARGE "T" HANDLE.
5. REMOVE SPOOL FROM STANDARD TOP BY REMOVING 1/2" BOLT AND LOCK NUT. THEN RUN 2" WEB STRAP UP AND OVER TOP AND REPLACE SPOOL. NOTE: TIGHTEN BOLT LIGHTLY SO SPOOL WILL TURN.
6. PLACE STANDARD ASSEMBLY INTO SLEEVE. SET WINCH TO DESIRED HEIGHT AND TIGHTEN SECURELY WITH ALLEN WRENCH. (NOTE: WHITE STRIPE ON POLE IS A RECOMMENDED PLACE FOR THE TOP OF THE WINCH BRACKET.)
7. ATTACH NET USING THE 4" SNAP HOOK AT THE TOP, AND LINE TENSIONER AND SNAP HOOK AT THE BOTTOM ON LOWER COLLAR. SET COLLAR AT DESIRED POSITION AND TIGHTEN WITH "T" HANDLE.
8. TOPS ARE MARKED WITH RINGS FOR APPROXIMATE NET HEIGHTS. SET UP AND MEASURE NET IN CENTER OF COURT FOR EXACT HEIGHTS. STANDARDS ADJUST EASILY BY LOOSENING AND TIGHTENING THE LARGE "T" HANDLE.

SAFTEY NOTE: ALWAYS BE CAREFULL WHEN LOOSENING THE LARGE "T"HANDLE, UNIT IS UNDER SPRING TENSION. ALWAYS HOLD TOP WITH ONE HAND, AND LOOSEN "T"HANDLE WITH THE OTHER.

www.stackhouseathletic.com

 <p>Stackhouse athletic equipment</p> <p>Phone: (503) 363-1840 Toll Free: (800) 285-3604 Fax: (503) 363-0511 www.stackhouseathletic.com</p>	3-1/2" ROUND ALUMINUM VOLLEYBALL STANDARDS		DATE: 1-09
	ASSEMBLY AND SET-UP INSTRUCTIONS		DRAWN BY: S.L.
	PAGE 1 of 3	PRODUCT CODE: VRAEW/VRAVE	DWG: VRAEW INST PG1-REV-09


VRAVE- ALUMI NUM END STANDARD WITHOUT WINCH

ASSEMBLY AND SET UP INSTRUCTIONS

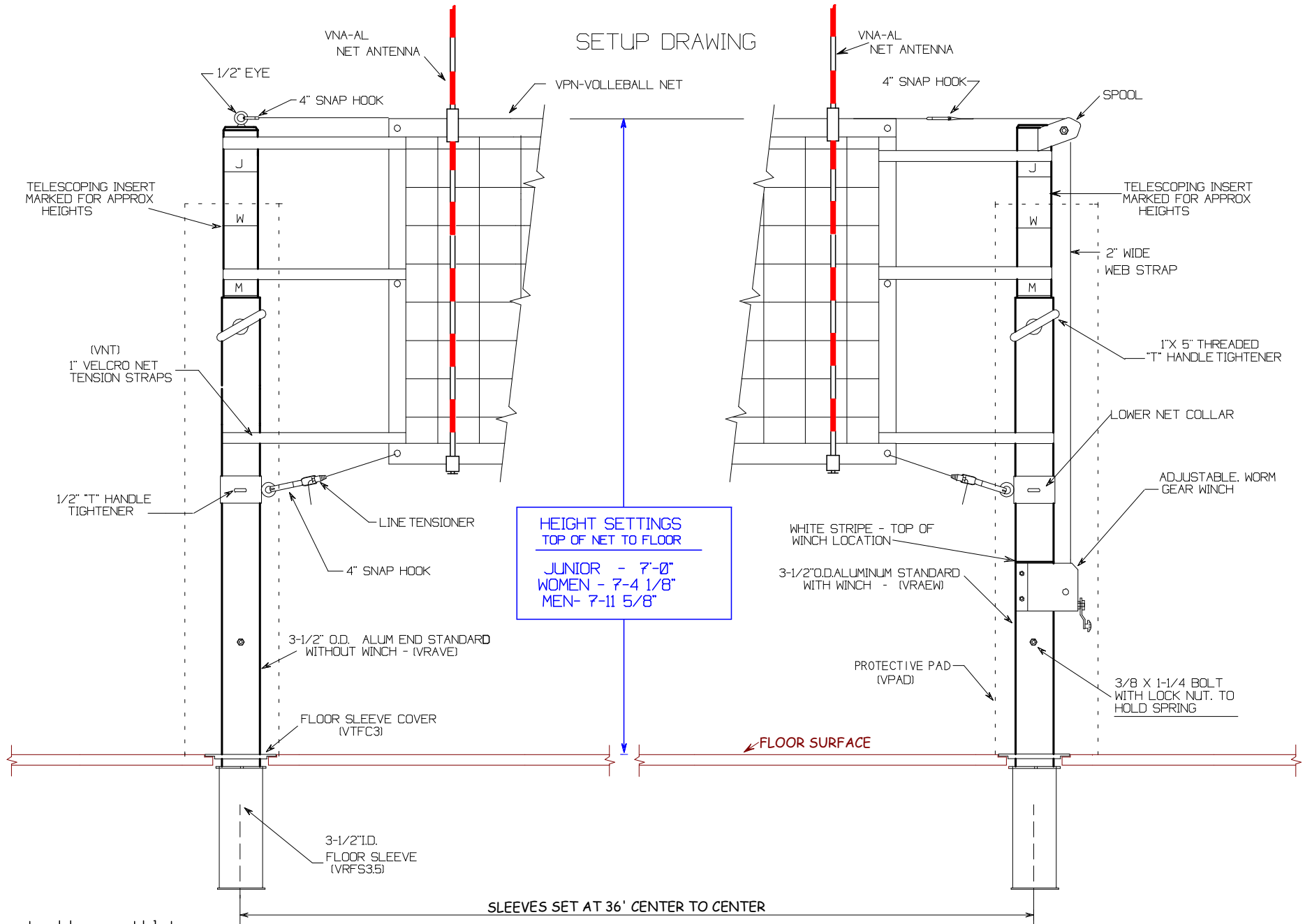
1. UNPACK CONTENTS OF BOTH BOXES AND LAY OUT ON A FLAT SURFACE.
2. REFER TO SET UP DRAWING ON PAGE 3. SLIDE LOWER NET COLLAR UP FROM THE BOTTOM OF STANDARD TO POSITION SHOWN.
3. SPRING ASSEMBLY FOR TOP IS SHIPPED INSIDE OF STANDARD WITH NO TENSTION. REMOVE TOP, AND REMOVE SPRING. THEN INSTALL THE 3/8 X 3-1/4 HEX BOLT IN HOLE IN STANDARD. REPLACE SPRING. CAREFULLY REINSTALL TOP AND LOCK DOWN WITH LARGE "T" HANDLE.
- 4 PLACE STANDARD ASSEMBLY INTO SLEEVE.
5. ATTACH NET USING THE 4" SNAP HOOK AT THE TOP, AND LINE TENSIONER AND SNAP HOOK AT THE BOTTOM ON LOWER COLLAR. SET COLLAR AT DESIRED POSITION AND TIGHTEN WITH "T" HANDLE.
6. TOPS ARE MARKED WITH RINGS FOR APPROXIMATE NET HEIGHTS. SET UP AND MEASURE NET IN CENTER OF COURT FOR EXACT HEIGHTS. STANDARDS ADJUST EASILY BY LOOSENING AND TIGHTENING THE LARGE "T" HANDLE.

SAFTEY NOTE: ALWAYS BE CAREFULL WHEN LOOSENING THE LARGE "T"HANDLE. UNIT IS UNDER SPRING TENSION. ALWAYS HOLD TOP WITH ONE HAND, AND LOOSEN "T"HANDLE WITH THE OTHER.

www.stackhouseathletic.com

 <p>STACKHOUSE athletic equipment</p> <p>Phone: (503) 363-1840 Toll Free: (800) 285-3604 Fax: (503) 363-0511 www.stackhouseathletic.com</p>	3-1/2" ROUND ALUMINUM VOLLEYBALL STANDARDS		DATE: 1-09
	ASSEMBLY AND SET-UP INSTRUCTIONS		DRAWN BY: S.L.
	PAGE 2 of 3	PRODUCT CODE: VRAVE/VRAEW	DWG: VRAVE INST PG2-REV-09

SETUP DRAWING



**HEIGHT SETTINGS
TOP OF NET TO FLOOR**

JUNIOR - 7'-0"
WOMEN - 7'-4 1/8"
MEN - 7'-11 5/8"

www.stackhouseathletic.com



Phone: (503) 363-1840 Toll Free: (800) 285-3604
Fax: (503) 363-0511 www.stackhouseathletic.com

3-1/2" ROUND ALUMINUM VOLLEYBALL STANDARDS		DATE: 1-09
SET-UP DRAWING		DRAWN BY: S.L.
PAGE 3 of 3	PRODUCT CODE: VRAEW / VRAVE	DWG: VRA SETUP PG3-REV-09