

NOTE: WE RECOMMEND INSTALLATION BE DONE BY A QUALIFIED CONTRACTOR.

INSTALLATION INSTRUCTIONS :
FLOOR SLEEVES AND COVERS FOR THE STACKHOUSE
3-1/2" VOLLEYBALL STANDARDS ON
(EXISTING) FLOATING WOOD FLOORS

PAGE 1

READ THESE INSTRUCTIONS IN COMPLETE BEFORE BEGINNING WORK

- 1- LOCATE AND MARK THE EXACT POSITION OF THE FLOOR SLEEVES. (NORMALLY 3'0" OFF THE COURT SIDELINE). FOR SINGLE COURT LAYOUTS SLEEVES SHOULD BE 36' ON CENTER. FOR SIDE BY SIDE COURTS WITH CENTER STANDARD, THE SLEEVES SHOULD ALSO BE 36' ON CENTER. IF THIS IS NOT PRACTICAL, PLEASE CONSULT THE FACTORY.
- 2- USING THE FLOORPLATE AS A GUIDE, TRACE OUTLINE OF THE PLATE ON THE FLOOR. DRILL PILOT HOLE IN THE CENTER FOR ROUTER GUIDE PIN.
- 3- USING A STRAIGHT 1/2" DIA. BIT , SET ROUTER FOR 3/16" DEPTH AND ROUTE A CIRCLE APPROX 4-3/8" DIA. FOR THE NEXT PASS, SET ROUTER FOR 3/8" DEPTH AND ROUTE TO AN ACCURATE DIAMETER OF 5-7/8". RESET DEPTH TO 3/16" AND ROUTE TO THE EXACT OUTSIDE DIAMETER OF THE COVER - 6-3/4"
- 4- WITH THE RING IN THE INVERTED POSITION, MAKE CERTAIN THE RING FITS INTO THE RELIEVED AREA. IF NOT, ENLARGE UNTILL RING FITS IN HOLE AND FLUSH WITH THE FLOOR. REATTACH PLATE TO SLEEVE.
- 5- USING A 5" HOLE SAW, BORE THROUGH THE HARDWOOD, PLYWOOD AND SUPPORT SLEEPERS , ON CENTER OF INSIDE DIAMETER OF RING.
- 6- CLEARANCE CUTOUTS ARE NEEDED FOR S-SPRING AND PIN, #10 STUD AND NUT(CABLE MOUNTS) , AND GROUND SLEEVE EARS.(4-EACH).
- 7- CHECK THE DISTANCE FROM THE TOP OF THE FINISHED FLOOR TO THE TOP OF THE CONCRETE. IF THIS DISTANCE IS GREATER THAN 3" CONSULT THE FACTORY BEFORE CONTINUING.
- 8- USING A ROTARY HAMMER, DRILL HOLES THROUGH THE CONCRETE AROUND THE CIRCUMFERENCE OF THE 5" HOLE DRILLED IN STEP #7.THESE HOLES SHOULD BE ANGLED OUT SLIGHTLY FROM TOP TO BOTTOM.
- 9- WITH A SHOP VAC, VACUUM ALL CEMENT DUST LEFT IN AND AROUND HOLES.
- 10- WITH A CHISEL BIT, CHIP THE CONCRETE REMAINING BETWEEN THE HOLES.
- 11 -BY HAND, REMOVE ANY CONCRETE WIRE, AND DIRT FROM THE HOLE TO A DEPTH OF APPROX 14"

www.stackhouseathletic.com

SCALE:

STACKHOUSE
athletic equipment

Phone: (503) 363-1840 Toll Free: (800) 285-3604
Fax: (503) 363-0511 www.stackhouseathletic.com

3-1/2" I.D. FLOOR SLEEVE AND PLATE FOR VOLLEYBALL STANDARDS

INSTALLATION INSTRUCTIONS - PAGE 1

PAGE: 1 of 3

PRODUCT CODE: VTF3.5S

DATE: 12-08

DRAWN BY: S.L.

DWG: VTF3.5S INST-WOOD P61

NOTE: WE RECOMMEND INSTALLATION BE DONE BY A QUALIFIED CONTRACTOR

INSTALLATION INSTRUCTIONS :

FLOOR SLEEVES AND COVERS FOR THE STACKHOUSE
3-1/2" VOLLEYBALL STANDARDS ON
(EXISTING) FLOATING WOOD FLOORS

PAGE 2

- 12- THE FINISHED EXCAVATION SHOULD BE 18" IN DIAMETER AT THE TOP AND 12" IN DIAMETER AT THE BOTTOM.
- 13- VACUUM ANY LOOSE PARTICLES FROM FROM THE HOLES. MAKE CERTAIN THE UNDERSIDE OF THE CONCRETE IS CLEAN AND DRY.
- 14- PLACE SLEEVE AND COVER UNIT INTO HOLE AND CHECK FIT. HAVING THE COVER CONNECTED TO THE SLEEVE INSURES THAT THE SLEEVE IS PROPERLY CENTERED TO THE FLOOR PLATE.IT ALSO INSURES PROPER DEPTH.

IMPORTANT: CHECK FOR ANY DAMAGE TO SPACERS OR BOLTS, AND THAT THE UNIT IS STRAIGHT.FAILURE TO DO THIS WILL CAUSE THE SLEEVE TO BE INSTALLED OUT OF PLUMB, CAUSING A LEAN TO THE UPRIGHT POST.
- 15- MIX GROUT(USE A NON METALLIC,"NON-SHRINK" CONCRETE GROUT WITH A FINAL CURE STRENGTH OVER 6,500 POUNDS). MANUFACTORS: EMBECO,HYDROCID, SUPER ROCK,AND MASTERBUILDERS MASTERFLOW #713.
- 16- TAPE SLEEVE OPENING,OR PACK WITH PAPER OR SUITABLE MATERIAL, TO PREVENT FILLING SLEEVE WITH GROUT.
- 17- FILL HOLE TO APPROX 1/2 TO 3/4 FULL INITIALLY, AS LEVEL WILL RISE WHEN SLEEVE IS PUSHED DOWN. IF MORE IS NEEDED WE SUGGEST RAISING COMPLETE UNIT BACK UP TO ADD MORE GROUT, OR CARFULLY REMOVE COVER PLATE SCREWS AND SPACERS.FILL TO LEVEL BELOW THE SLEEVE EARS, AND REPLACE SPACERS AND COVER .
- 18- WITH THE COVER SEATED FLUSH WITH THE FLOOR, ATTACH WITH THE THREE WOOD SCREWS PROVIDED. NOTE DRAWING,PAGE 3.
- 19- AFTER THE GROUT SETS, GENTLY REMOVE THE BOLTS AND SCREWS AND LIFT THE FLOOR PLATE OFF.
- 20- REMOVE SPACERS AND REPLACE FLOOR PLATE WITH THE 3 OUTER WOOD SCREWS ONLY. THIS IS IMPORTANT AS IT ALLOWS THE FLOORPLATE TO "FLOAT" WITH THE FLOOR FREE OF THE SLEEVE.
- 21- WE RECOMMEND THE COVERS BE LEFT OPEN FOR 24 HOURS ALLOWING THE MOISTURE TO ESCAPE.
- 22- KEEP ALL ACTIVITIES OFF OF THE IMMEDIATE AREA SURROUNDING THE FLOORPLATE FOR 48 HOURS. ALLOW 10 DAYS CURING TIME BEFORE USING EQUIPMENT.

www.stackhouseathletic.com

SCALE:

STACKHOUSE
athletic equipment

Phone: (503) 363-1840 Toll Free: (800) 285-3604
Fax: (503) 363-0511 www.stackhouseathletic.com

3-1/2" I.D. FLOOR SLEEVE AND PLATE FOR VOLLEYBALL STANDARDS

INSTALLATION INSTRUCTIONS - PAGE 2

PAGE: 2 of 3

PRODUCT CODE: VTFC3.5S

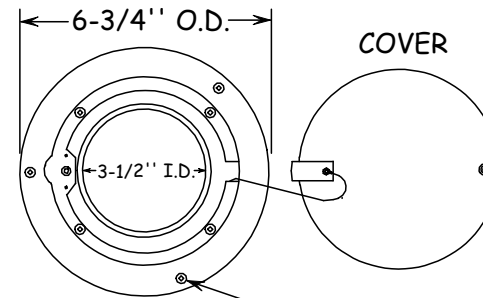
DATE: 12-08

DRAWN BY: S.L.

DWG: VTFC3.5S INST-WOOD P62

**INSTALLATION DRAWING:
FLOOR SLEEVES AND PLATES FOR THE STACKHOUSE
3-1/2" VOLLEYBALL STANDARDS ON
(EXISTING) FLOATING WOOD FLOORS.**

TOP VIEW OF PLATE AND SLEEVE
(SHOWN OPEN)



NOTE: AFTER GROUT IS SET, REMOVE THE FOUR SCREWS AND SPACERS TO ALLOW FOR MOVEMENT IN FLOOR

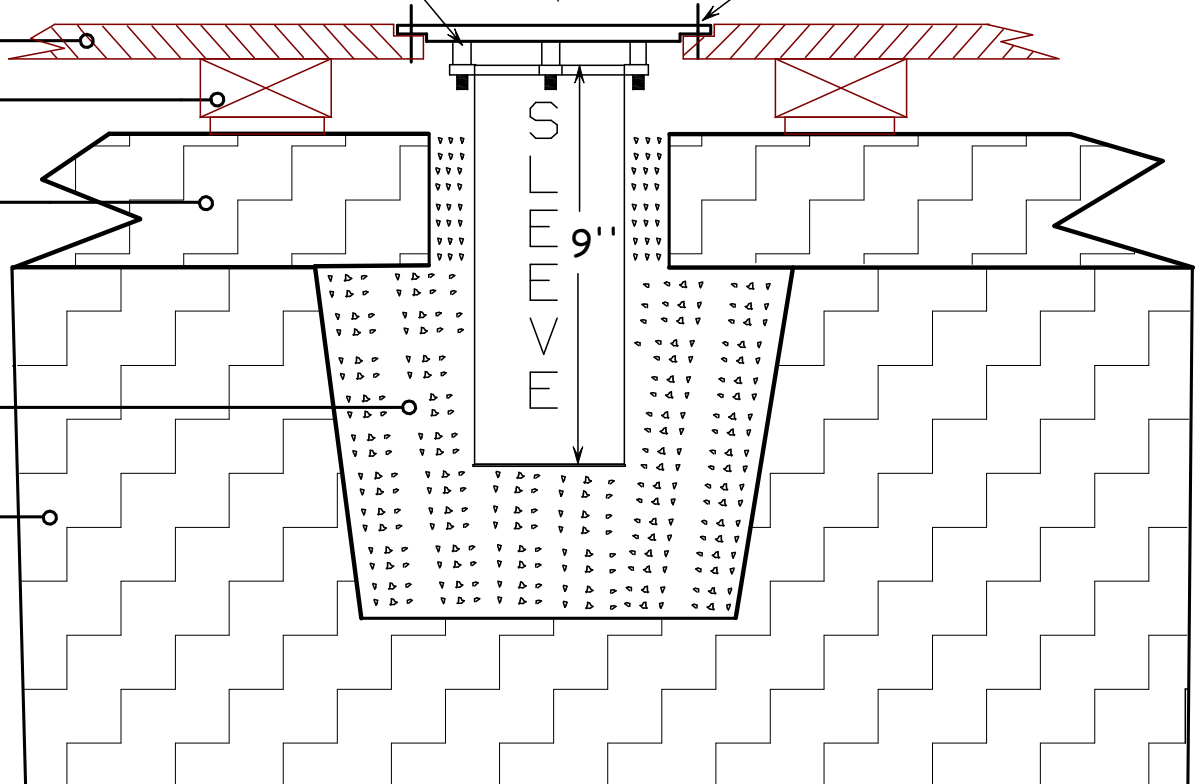
WOOD SCREWS
(3 - PER PLATE)

HARDWOOD FLOOR
SLEEPER

CONCRETE SLAB

GROUT

GRADE



NOTE: FOR FLOOR AND SUB FLOOR CONSTRUCTION OTHER THAN SHOWN, CONTACT MANUFACTURER.

www.stackhouseathletic.com

SCALE: NTS

STACKHOUSE
athletic equipment

3-1/2" I.D. FLOOR SLEEVE AND PLATE FOR VOLLEYBALL STANDARDS

DATE: 12-08

INSTALLATION DRAWING - PAGE 3

DRAWN BY: S.L.

Phone: (503) 363-1840 Toll Free: (800) 285-3604
Fax: (503) 363-0511 www.stackhouseathletic.com

PAGE: 3 of 3

PRODUCT CODE: VTFC3.5S

DWG: VTFC3.5S INST-WOOD P63